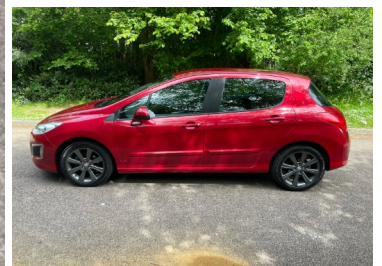


Napier Motor Company

2013(13) Peugeot 308 1.6 VTi Active 5dr

SOLD



Engine: Petrol
Body: Hatchback
Gearbox: Manual
Capacity: 1598cc
Colour: Red
Mileage: 15,981
CO²: 152g/km
MPG: 42.8mpg
Top Speed: 121mph
BHP: 118bhp
Insurance Grp: 15E

Napier Motor Co Ltd
 7a New Street Garage
 New Street
 Horsham
 West Sussex, RH13 5DT

FULL SERVICE HISTORY	17" ALLOYS
AUDIBLE LIGHTS ON WARNING	CRUISE CONTROL + SPEED LIMITER
DIGITAL CLOCK	ELECTRIC BOOT RELEASE ON TAILGATE
EXTERNAL TEMPERATURE GAUGE	IGNITION KEY IN WARNING CHIME
INFORMATION DISPLAY	PAS - SPEED RELATED
REMOTE HEADLAMP ADJUSTMENT FROM FASCIA	REV COUNTER
TRIP COMPUTER	SERVICE INTERVAL INDICATOR
RADIO/MP3 CD PLAYER WITH AUX INPUT	6 SPEAKERS (4 SPEAKERS/2 TWEETERS)
STEERING COLUMN MOUNTED MULTIFUNCTION CONTROLS	SPEED DEPENDENT AUDIO VOLUME CONTROL
BODY COLOUR DOOR MIRRORS	AUTOMATIC LIGHTS ON AND RAIN SENSITIVE WIPERS
BODY COLOUR FRONT/REAR BUMPER APRONS	BODY COLOUR DOOR/BOOT HANDLES
DOUBLE ANGLED DRIVER'S DOOR MIRROR	BODY COLOURED SIDE PROTECTION MOULDINGS
ELECTRIC REAR WINDOWS WITH ONE TOUCH/ANTI-PINCH	ELECTRIC FRONT WINDOWS + ONE TOUCH + ANTI-PINCH
ELECTROCHROME REAR VIEW MIRROR	ELECTRICALLY ADJUSTABLE AND HEATED DOOR MIRRORS
	FRONT FOG LAMPS
	HEADLAMP DELAY

Call:01403 750456 | www.napiermotorco.co.uk